

Rapidly Deployed Self-Contained Educational & Health Facilities

In addition to providing Internet-delivered content applications and services for education, MetroLink has teamed with Green Horizon Manufacturing to provide **EduPlex** and **MedPlex**, completely self-contained modular structures that can be quickly deployed to serve as a school facility or medical clinic in remote and rural areas. **EduPlex** and **MedPlex** modular facilities are excellent replacements for any 'brick and mortar' buildings that may be constructed in compliance with a mining or energy company's social responsibility requirements.



EduPlex and **MedPlex** facilities are comprised of two to eight expandable modules. Classroom modules can accommodate up to thirty students each. Clinic modules are comprised of two to three examination rooms and a small laboratory. Overnight care can be accommodated by a five to six bed 'micro hospital'. Kitchen and dining facility modules are also available as part of the package. Each facility is completely 'green' and includes alternate power, water filtration and waste treatment, as well as a wide variety of Internet and communications systems, via wireless or satellite.

Units are shipped as standard seaboard container modules (7.5' x 7.5' x 40'), and are expandable at set-up to 15' x 40'. The entire facility can be set-up and operational in a matter of days, and can be moved if necessary. In addition, enhanced security features can be added in potentially hostile environments.

Environmental

Modules integrate highly efficient environmentally friendly systems that include these features:

- The highest 'R' rating for any structure of its type, allowing for efficient cooling and heating in the harshest of environmental extremes
- School modules are equipped with desks, white boards, work stations, administrative offices, kitchen and dining facilities
- Computers, distance learning systems and support equipment is available as part of the 'SchoolWeb' package
- Clinic modules are equipped with examination tables, basic examination equipment, work stations, administrative offices and break facilities
- Computers, telemedicine systems and support equipment is available as part of the 'HealthWeb' package
- A wide variety of alternative and back-up power options are available including wind generation, solar cells, hydrogen fuel cell and diesel generators
- Efficient and sanitary filtration and storage of potable water

- State-of-the-art treatment, storage and disposal of solid waste and brown water
- Safe and secure storage of fuel in buried tanks with reinforced concrete lids
- Covered walkways and sunshades to shield people from sun, rain, inclement weather when walking between modules
- Attractive landscaping with patio and garden areas for outside dining.

Communications

The communications package is user-defined, but can include systems for entertainment, Internet access, VoIP connectivity and tactical communications. This includes:

- Satellite uplink and downlink facilities that can be used to provide Internet and VoIP service to the facility for workplace and personal communications
- Satellite downlink facilities and cable distribution systems for entertainment television
- Wireless broadband systems, strategically located both indoors and outdoors, to provide ubiquitous Wi-Fi coverage throughout the compound
- An internal VoIP telephone system providing a high degree of reliability and quality for business and personal communications
- Support data systems to provide for the local caching of data, secure storage of files, and network management functions
- Back-up and emergency power.

EduPlex & MedPlex Module Views



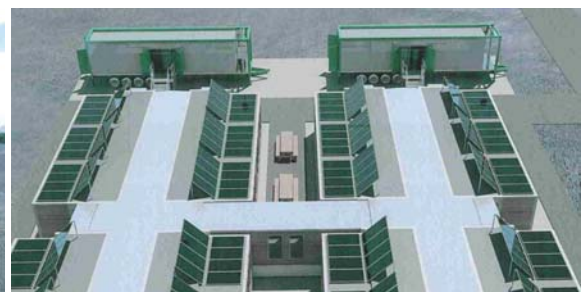
FOUR UNIT LAYOUT



EIGHT UNIT LAYOUT (WITH CSUS)

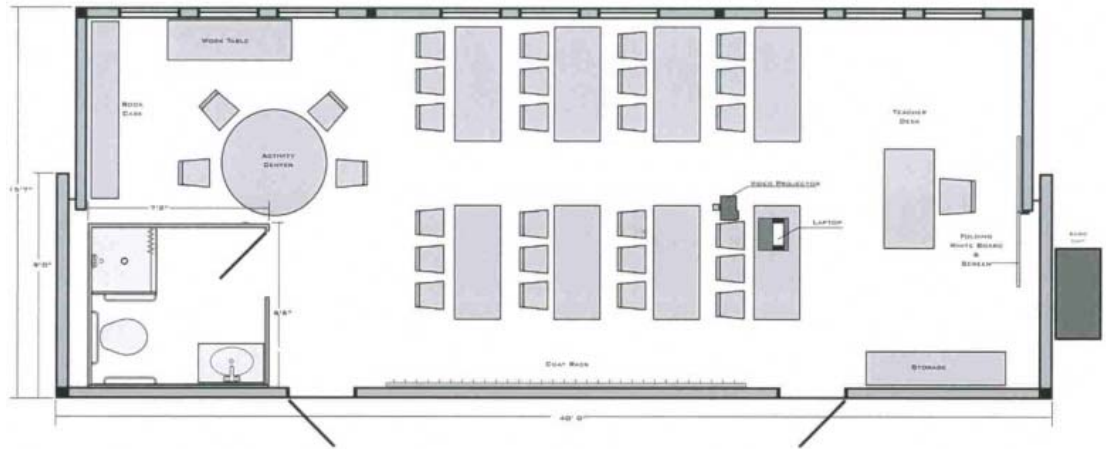


SINGLE CLASSROOM OR CLINIC MODULE

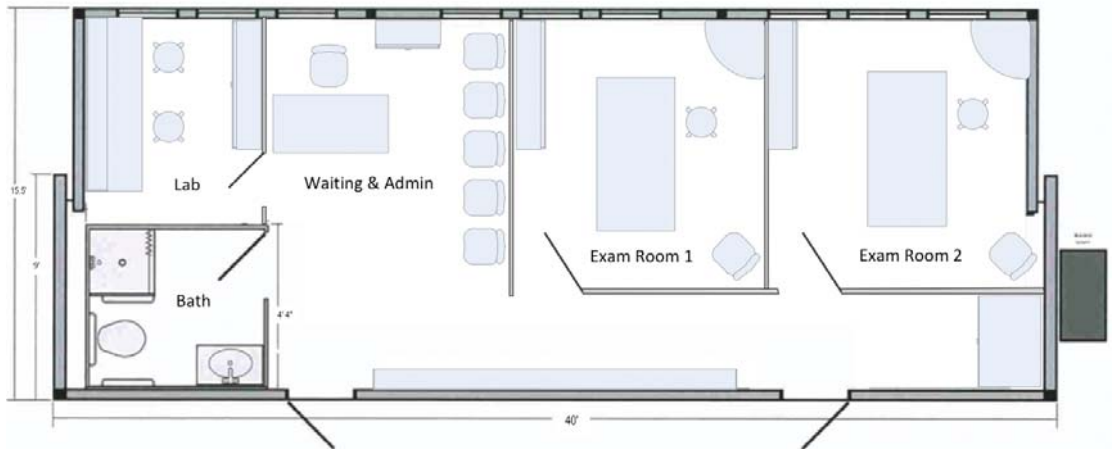


ELEVATED VIEW (WITH CSUS)

EduPlex Floor Plan



MedPlex Floor Plan



About MetroLink Solutions

MetroLink Solutions, Inc. provides a wide variety of telecommunications applications, products and support services designed to bring world-class voice, data and video services, for education, healthcare and community development, to remote and rural areas of emerging markets worldwide. MetroLink also provides sophisticated security technology supporting a wide variety of perimeter, facility and personnel safety solutions in high-risk situations. MetroLink has formed strategic alliances with leading providers of protective security services, proprietary applications and advanced security hardware. These unique alliances are focused on ensuring the safety of personnel, safeguarding critical facilities, tracking the whereabouts of assets and monitoring the movement of vehicles in hostile and high-risk environments.

Many of MetroLink's security products and services were originally designed for use by the Department of Defense, and are in use by security agencies around the globe. Military versions of a number of these systems are in use today, supporting critical applications in hostile environments around the world.

Contact Information

For more information about MetroLink Solutions, Inc., and its products and services, please visit our website at www.metrolinksolutions.com or contact:

In Canada:

MetroLink Solutions, Inc.
501-525 Seymour Street
Vancouver, BC V6B 3H7

Patrick Fitzsimmons

Tel: 604-700-9324

pfitzsimmons@metrolinksolutions.com

In the US:

MetroLink Solutions Corp.
15323 146th Ave SE
Snohomish, WA 98290

Paul Brandenburg

Tel: 360-540-2058

paulb@metrolinksolutions.com